

jQuery Masonry - Version 1.0

The jQuery Masonry extension makes it possible to create grid layouts that adapt to the screen size dynamically! Create responsive layouts with Quick 'n Easy Web Builder! This is a wrapper for David DeSandro's Masonry jQuery plug-in, but it has been optimized to work with QnEWB. Check out the website for more details:

<http://masonry.desandro.com>

You may have seen this concept on websites like:

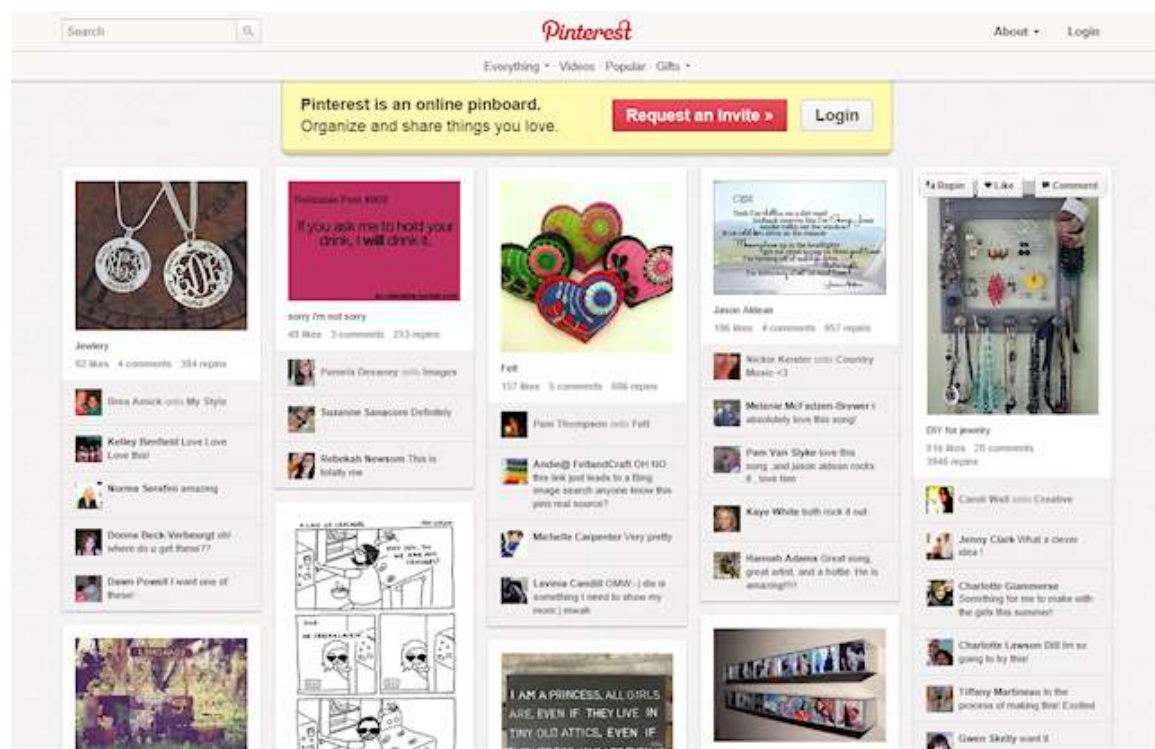
<http://pinterest.com/>

<http://www.typtoken.net/>

<http://iam.beyonce.com/>

The idea is that you create a grid layout which will be dynamically rearranged based on the available space in the browser window.

Let's assume that all items (or 'bricks') in the layout are layers each with their own content. So you will have a layer with a slideshow, a layer with text, a layer with the latest news etc. Masonry measures all of the items and rearranges them in the best way with what is spatially available.



Properties

Selector

Specifies a filter for the items. This can be any valid jQuery selector (<http://api.jquery.com/category/selectors/>). Although for most users the default (in combination with the instructions later in this document) should be ok.
Default value: **.item** (all elements with class name 'item').

Container

Specifies the container to which masonry will be applied. The default value is **'#container'** which means the 'body' of the page. Note that the **'#container'** only exists if the page is centered (select one of the 'Center page' options in Page Properties).

Alternatively you can use a layer which holds all the other layers/bricks. In that case specify the ID of the layer. For example: **'#Layer1'**.

Column width

Specifies the width of 1 column of your grid.

Gutter width

The gutter width option adds additional spacing between columns, but not on the outer sides of the container (unlike margins).

Margin

Specifies the margin between the items.

Fit width

If enabled, Masonry will size the width of the container to the nearest column. When enabled, Masonry will measure the width of the container's parent element, not the width of the container. This option is ideal for centering Masonry layouts.

Enable animation

Rearrangements can be animated when the container is resized. Note that for larger websites this may be slow...

Animation duration

Specifies the duration of the animation.

Animation easing

Specifies the easing effect of the animation.

How to use this extension?

To be able to use this extension you should be familiar with concept of layers. We will use layers as 'bricks' for the masonry layout, because layers can contain multiple other objects. But basically you can use any object as a brick.

Step 1

Create a new project (or a new page within an existing project).

Step 2

Open page properties and select 'Center this page in the browser window horizontally'. This will make sure the page has a '#container' wrapper.

Step 3

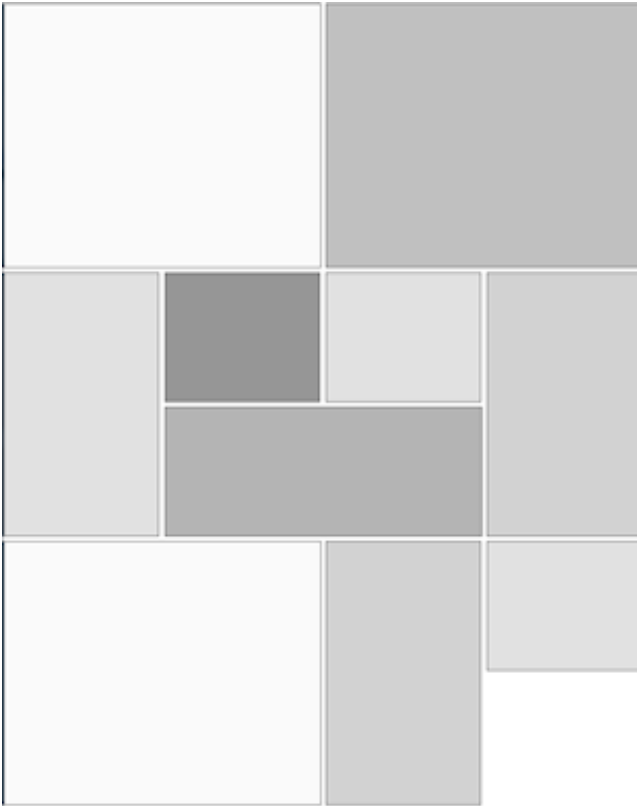
Add a few layers to the page. Check out the website <http://pinterest.com/> to get the general idea. You do not need to align all layers perfectly because the extension will take care of that.

Here's an example:



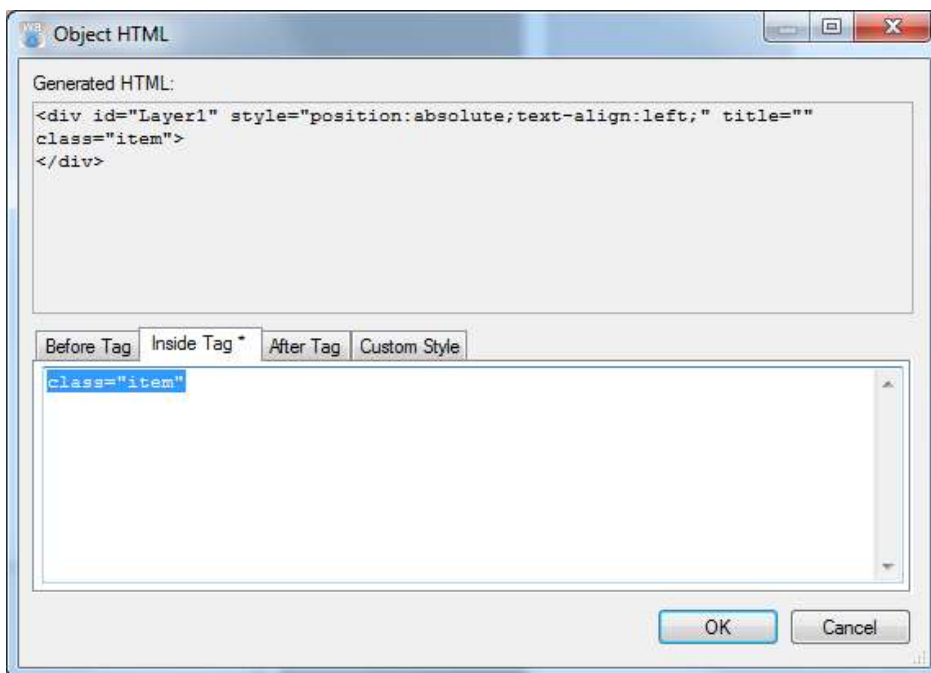
Of course in a real website the layers will have some content...

This is what it will look like when it has been 'masoned':



Step 4 (important!)

For each layer you want to make part of the masonry layout add the following HTML code to the 'Inside tag' section: `class="item"`



Step 5

Now add the jQuery Masonry extension.

For this example the default values should be ok:

Selector: **.item**

Container: **#container**

Step 6

Publish or preview the page.

Notes:

It will probably take some practice to get the best results. Check out the masonry website to get some inspiration.

In the example we've used the '#container' (= entire page) for the masonry layout. However most pages will have some kind of header so in that case it's better to use another layer as the container for the bricks, so they will be rearranged within this layer and do not overlap the header. Enable 'horizontal resizing' for the layer (otherwise it will not resize!) and make it the same width as initial page width.

You can view examples here:

<http://www.quickandeasywebbuilder.com/support/masonry/test1.html>

<http://www.quickandeasywebbuilder.com/support/masonry/test2.html>

Demo project:

<http://www.quickandeasywebbuilder.com/support/masonry/masonry.zip>

How to install this extension so it is available in Quick 'n Easy Web Builder?

You can use the Extension Manager (Menu->Tools->Extension Manager) to install this extension.

Alternatively you can manually copy all files from the zip file to the Web Builder extensions folder. Usually this folder is in this location:

/Documents/Quick 'n Easy Web Builder/extensions/

License agreement

This extension is not officially supported; it is made available as an extra service for the registered users of Quick 'n Easy Web Builder that find it useful. It is provided "AS IS" without warranty of any kind, either expressed or implied.

Requirements

Quick 'n Easy Web Builder 1.5 or higher

Copyright 2012 David DeSandro

This extension was created by Pablo Software Solutions

Copyright 2012 Pablo Software Solutions

<http://www.quickandeasywebbuilder.com>